

# enolcon gmbh

‘Power for the future’



# CONTENT

enolcon company overview

enolcon's areas of service

enolcon's references



# CONTENT

enolcon company overview

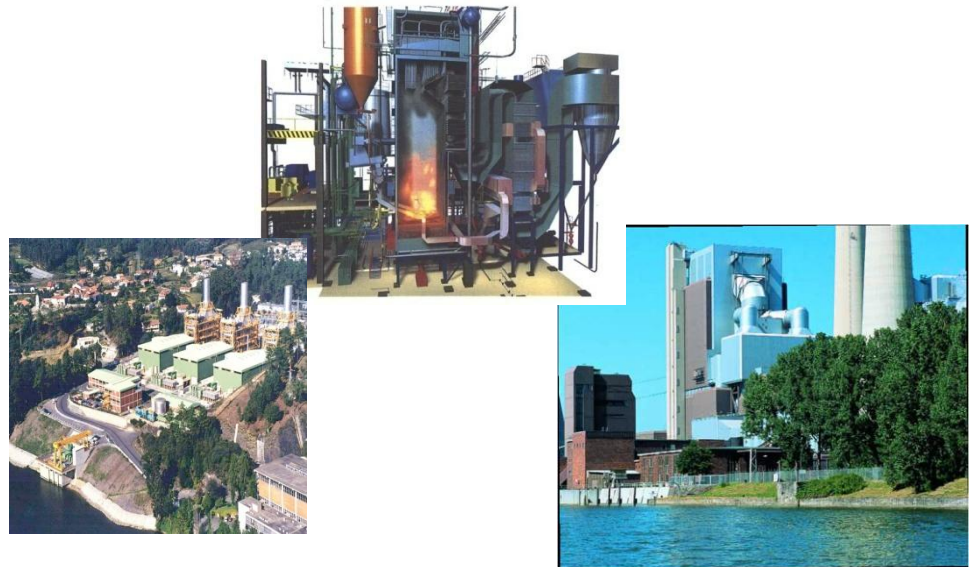
enolcon's areas of service

enolcon's references



# enolcon company overview – Key Company Data:

- **Founded in 2008**
- **Family-owned**
- **Headquartered in Bietigheim-Bissingen (near by Stuttgart)**
- **Revenues approx. > 1.000.000,- Euro**



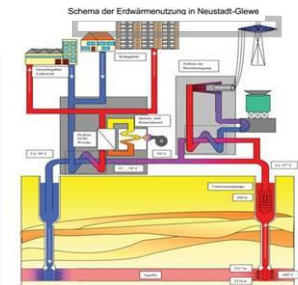


# enolcon company overview – Business activities



## Energy and Power Plant Technology

- **Conventional fuels**
  - Natural Gas-fired Combined Heat and Power Plants
  - Hard Coal and Lignite Coal-fired Plants
  - RDF-fired Plants (EBS/ESBS)
- **Renewables**
  - Biomass
  - Concentrated Solar Power (CSP)
  - Photovoltaics (PV)
  - Biomass Gasification
- **Clean Technologies**
  - Waste Air Cleaning
- **Others**
  - Geothermal Power Plants



# CONTENT

enolcon company overview

**enolcon's areas of service**

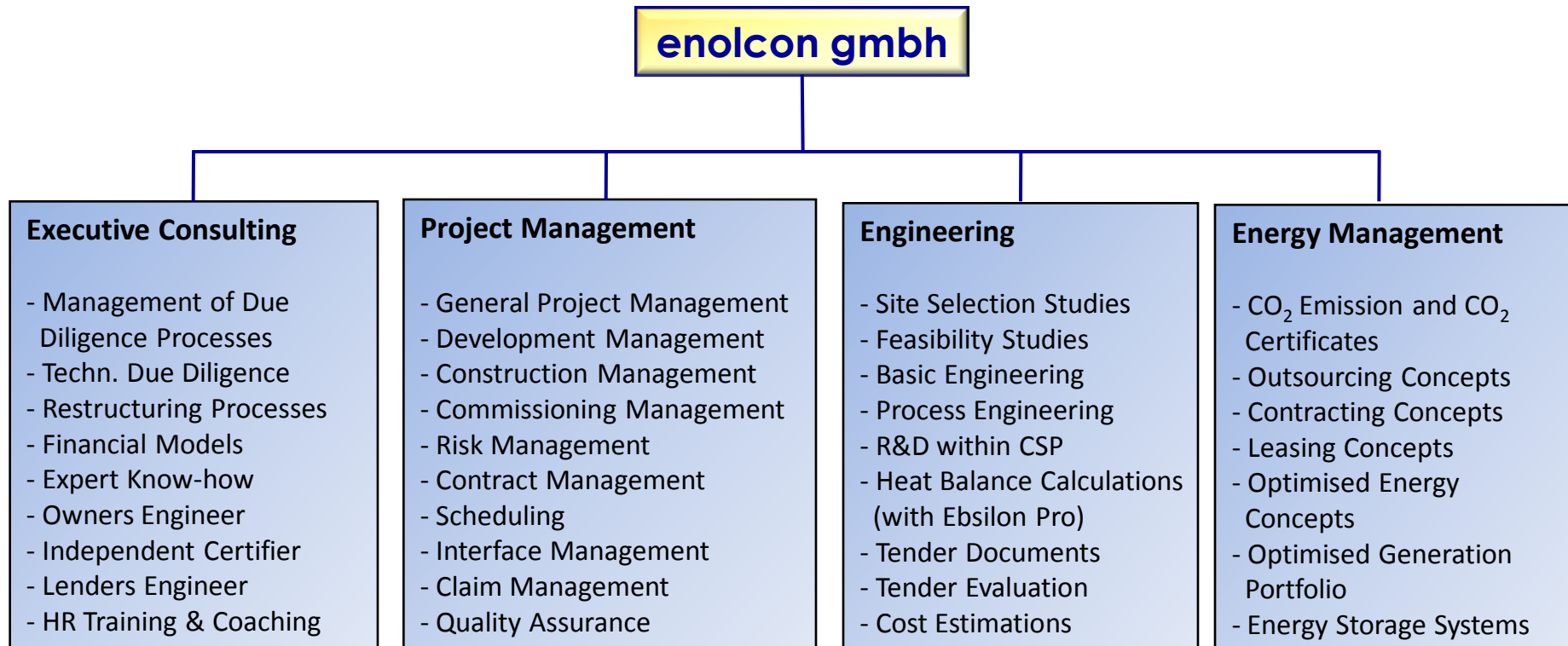
enolcon's references



**Within the different technology sectors, enolcon can provide the following services:**

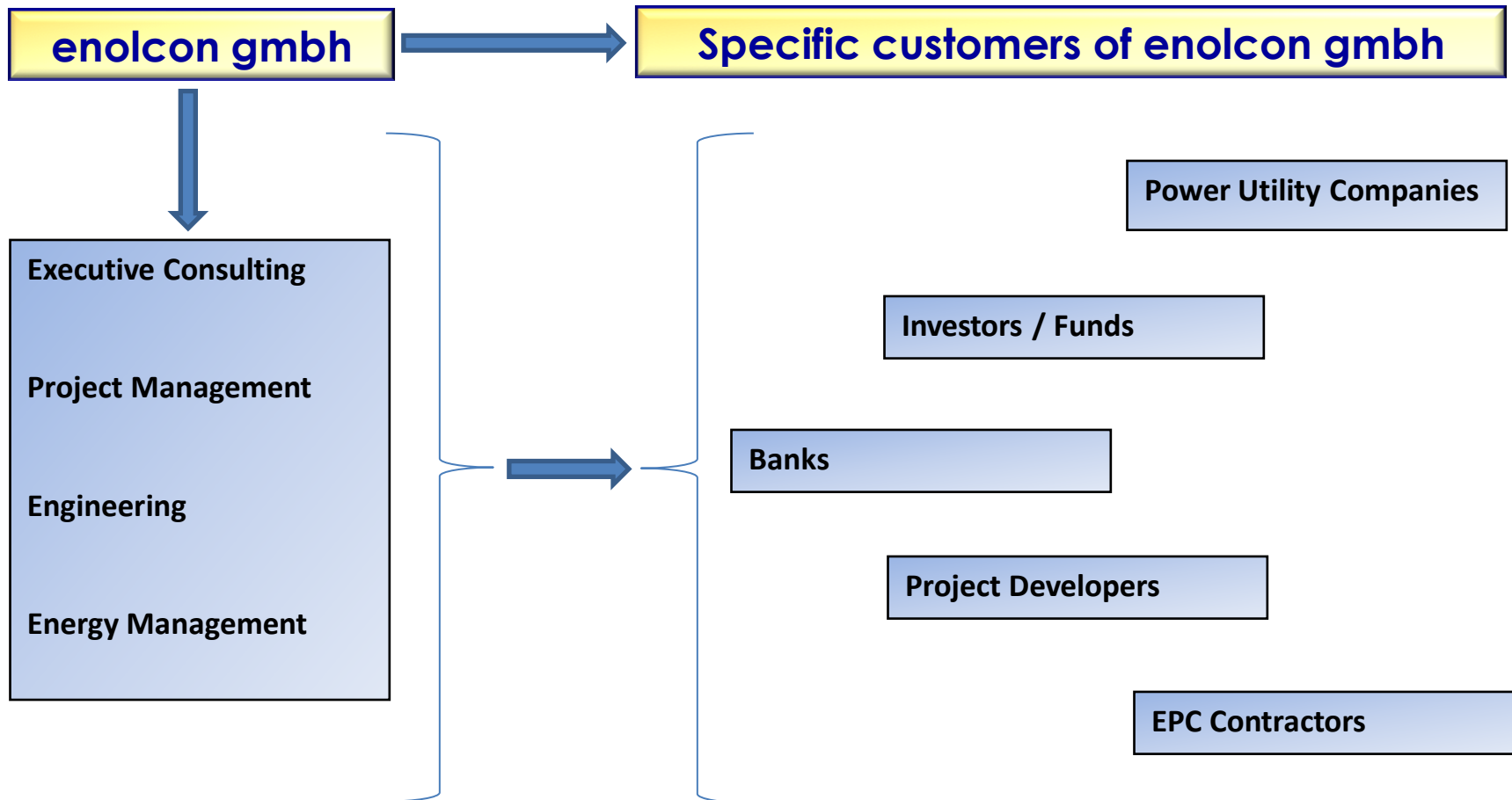
- Executive Consulting
- Project Management
- Engineering
- Energy Management



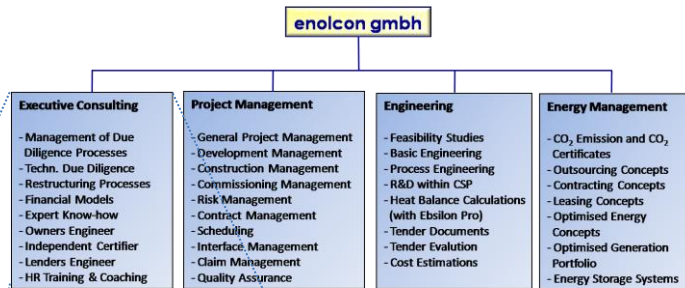




# enolcon's areas of service: customers (3)



# enolcon's areas of service: customers (4)



## Executive Consulting

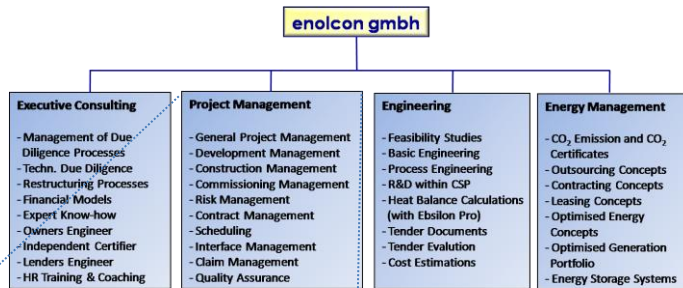
- Management of Due Diligence Processes
- Techn. Due Diligence
- Restructuring Processes
- Financial Models
- Expert Know-how
- Owners Engineer
- Independent Certifier
- Lenders Engineer
- HR Training & Coaching

- Evaluation of projects, assets and companies, preparation of GO/NOGO-decisions based on experiences, benchmarks, tools (e.g. financial models)
- Support in the set-up and organisation of companies, restructuring of M&A
- Independent consultancy works
- Technical support as Owner's Engineer
- Support for the lenders monitoring project progress, fulfillment of payment or LC conditions

### Actual examples:

- \* Due diligence of a power utility
- \* 100 MW<sub>el</sub>-CSP-project
- \* Consultancy works for a power utility on integration of acquired power plants

# enolcon's areas of service: customers (5)



## Project Management & Supervision

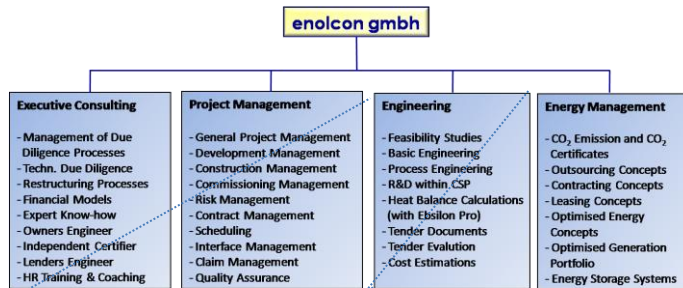
- General Project Management
- Development Management
- Construction Management
- Commissioning Management
- Risk Management
- Contract Management
- Scheduling
- Interface Management
- Claim Management
- Quality Assurance

- Active project management over the complete project life time for and on behalf of clients
- Support in the set-up and organisation of projects, close follow up
- Scheduling or review of schedules
- Identification of project risks
- Contract management, mitigation of claims
- Identification of interfaces and mitigation of risks
- Project development until financial close
- Supervision/management of construction and commissioning activities

### Actual examples:

- \* Project management of a 400 MW CCGT-CHP-plant
- \* 100 MW<sub>el</sub>-CSP-project

# enolcon's areas of service: customers (6)



## Engineering

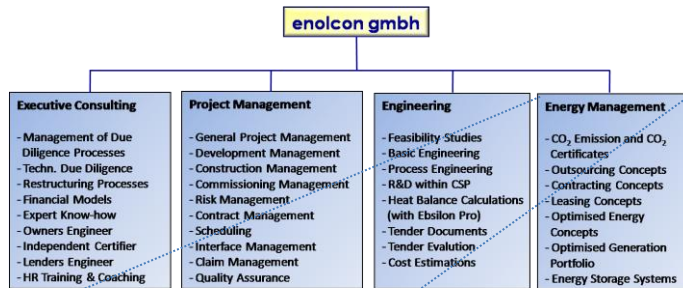
- Site Selection Studies
- Feasibility Studies
- Basic Engineering
- Process Engineering
- R&D within CSP
- Heat Balance Calculations (with Ebsilon Pro)
- Tender Documents
- Tender Evaluation
- Cost Estimations

- Engineering Services on Know-how level, e.g. basic engineering
- Evaluation and services for technology Development
- Engineering design for key components (turbines, condensers etc.)
- Estimations for plant investment costs, O&M costs, site development costs
- Preparation of tender documents, tender evaluations (technical and commercial)
- Heat and mass balance calculations with Ebsilon Pro

### Actual example:

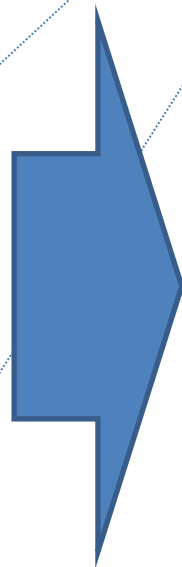
- \* Engineering of tender documents for steam turbines, boiler, air cooled condenser

# enolcon's areas of service: customers (7)



**Energy Management**

- CO<sub>2</sub> Emission and CO<sub>2</sub> Certificates
- Outsourcing Concepts
- Contracting Concepts
- Leasing Concepts
- Optimised Energy Concepts
- Optimised generation Portfolio
- Energy Storage Systems



- CO<sub>2</sub> monitoring, CO<sub>2</sub> certificate trading
  - Development of outsourcing concepts for industry parks
  - concepts to optimise on-site power and heat generation
  - Optimised energy dispatch with advanced energy storage systems
- Actual example:
- \* Battery systems for stationary applications
  - \* Contracting project to optimise the power and heat supply



## CONTENT

enolcon company overview

enolcon's areas of service

enolcon's references



## CONTENT

enolcon company overview

enolcon's areas of service

enolcon's references



# enolcon's References – selected Projects

- Due Diligence on coal-fired power stations (capacity range up to 800 MW<sub>el</sub>)
- Project Management for a 400 MW<sub>el</sub> CCGT-CHP power plant
- Consultancy Work on a CSP (Concentrating Solar Power) project
- Feasibility Study and Basic Engineering Work for a 100 MW<sub>el</sub> CSP project
- Detailed technical comparison of CSP-systems (Linear Fresnel)
- Pre-engineering/concept study for a 130 Mwel CCGT-CHP-power plant
- Owner's Engineer for the Biomass Gasification Project ,Blue Tower Herten
- Due Diligence for a power utility
- Due Diligence for a production company
- Consultancy Work for project development of a 900 MW coal-fired power plant

# enolcon's References (excerpt)– Partners and Customers

